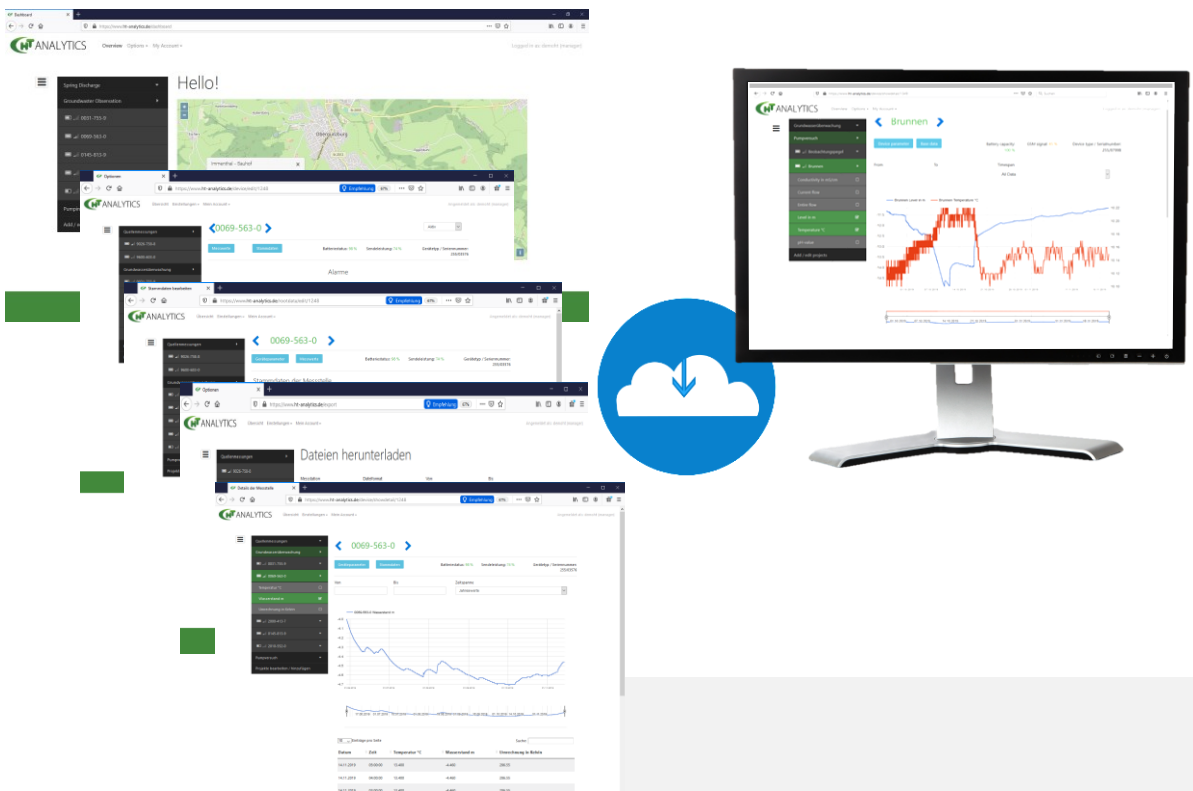
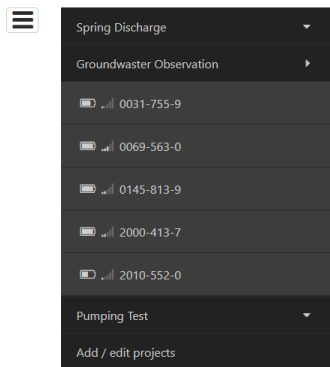


# HT Analytics

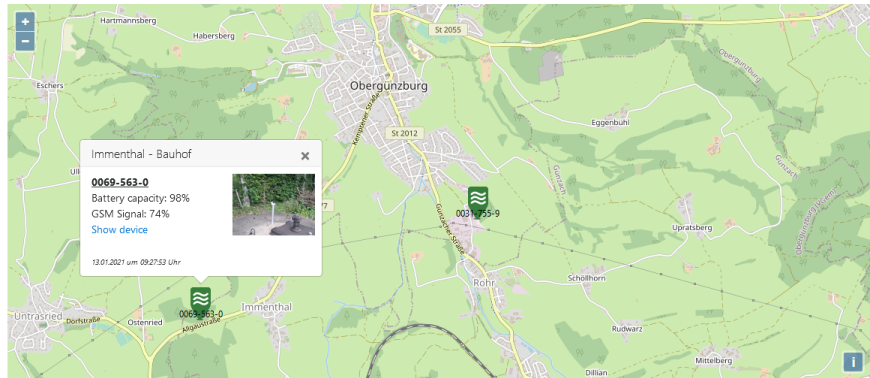
The cloud for your hydrological data



- Continuous access to current measured values, whether in the office, in the home office or on the go
- For remote parameterization of cellular telemetry dataloggers
- Enables the use of telemetry dataloggers via the Internet despite high internal IT security criteria



# Hello!



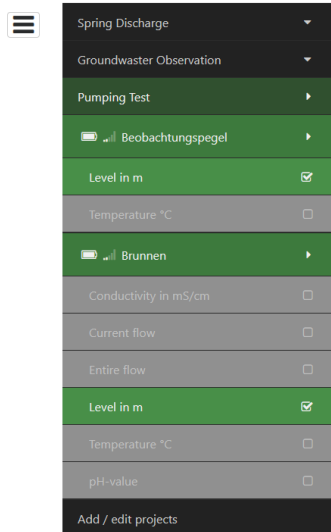
**Cloud solution - access to current measured values at any time, whether in the office, in the home office or on the go.**

HT offers you central data management in the cloud, HT Analytics. The focus is on an easy-to-use and safe way to analyze the recorded measurements and to record and evaluate the operating data of the cellular telemetry dataloggers. You can also organize a simple data exchange between colleagues or working groups, we take care of the server hosting.

You can access the latest measurements 24/7 from any computer connected to the Internet by using your individual browser. You don't need to install any software on your computer to manage data. The measured data are available directly as an ASCII or Excel-compatible download format. With HT Analytics, you also take on targeted device management and are able to change the device status of the installed telemetry dataloggers, such as measurement or transmission intervals

HT Analytics differentiates between user permissions, so that you can exchange measurements online with colleagues or in working groups by providing a password with read permissions. However, you retain control of the measurement data and device control via your own master password.

**"It has never been so easy to share data with colleagues or in working groups."**

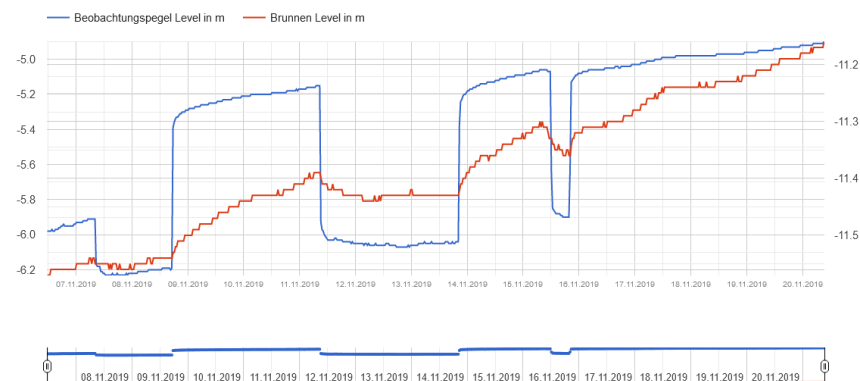


- Spring Discharge
- Groundwater Observation
- Pumping Test
- Beobachtungspegel
- Level in m
- Temperature °C
- Brunnen
- Conductivity in mS/cm
- Current flow
- Entire flow
- Level in m
- Temperature °C
- pH-value
- Add / edit projects

## Observation Well

Device parameter Base data Battery capacity: 100 % GSM signal: 45 % Device type / Serialnumber: 255/87999

From To Timespan Comparison-line  
Last 14 days OK X



## Intuitive data analysis - with the dynamic chart tool

You can keep track of your water data with the clearly structured user interface. View entire data series over long periods of time or use the zoom function to analyze details more closely.

Using the mouseover effect, you receive direct information on the respective measured values, which are also displayed for several selected measuring points.

Compare values from different measuring points to identify deviations immediately. You can use a multiple selection of measuring points in one representation to check the plausibility of an entire measuring area at a glance.

## Edit measurement data - quickly and easily



You can edit individual data records directly on the user interface. If longer time series need to be processed, a direct Excel export is possible. After editing, you simply import the data back into HT Analytics.

Spring Discharge

Groundwater Observation

0031-755-9

0069-563-0

0145-813-9

2000-413-7

2010-552-0

Pumping Test

Add / edit projects

## 2000-413-7

Active

Measurement values Base data

Battery capacity: 99 % GSM signal: 45 % Device type / Serialnumber: 255/03266

### Alarms

Device inactive message: No

Alert at low battery: Yes, at < 15 %

Alert at low GSM signal: No

Limit alarm (for level only): mMSL 0

Update

### Measuring and Transmission settings

Next Transmission

Date: 15.11.2019

Time: 04:21

Day: 01 Hour: 00 Minute: 00

Transmission interval: 01:00:00

Update

### Measurement options

Next measurement time

Date: 29.10.2020

Time: 00:00

Day: 00 Hour: 01 Minute: 00 Second: 00

Measurement interval: 00:01:00

Update

## Automated device monitoring - never miss a malfunction

HT Analytics monitors the functionality of HT Telemetry Dataloggers. Receive an email notification when a measuring site has not transmitted any data or when the battery level is low. The measurements are also analyzed so that you receive a message when a limit value is exceeded.

You can always keep an eye on important device and site parameters such as the battery level or the quality of the local cellular network.

## Change device settings online

Maintain online access to the device parameters such as the set sample time or the defined transmission interval. Would you like to increase the data density or receive the latest measured values more frequently? You not only set the desired parameters on site at the measuring point, but can also do this online via HT Analytics.