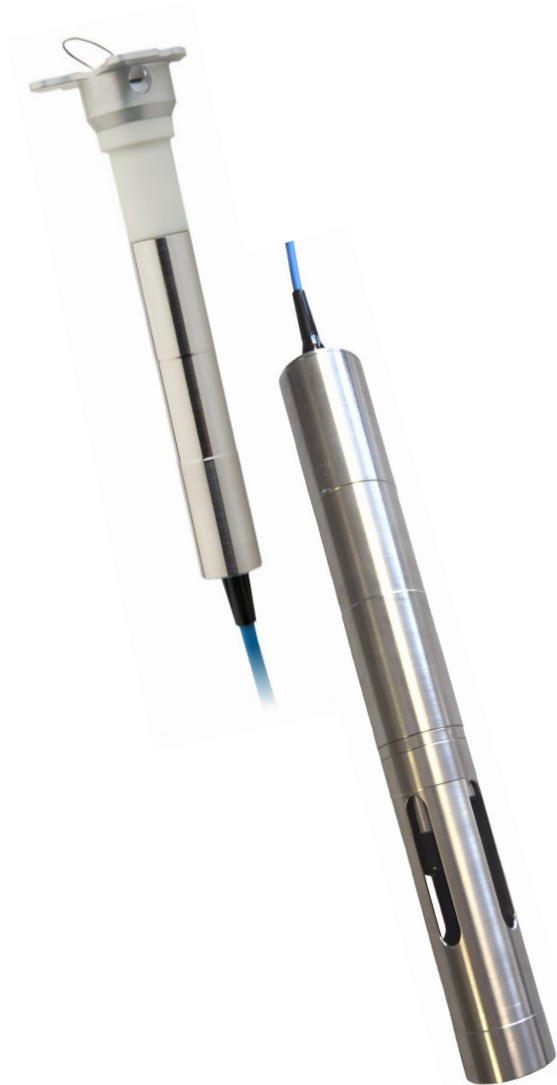


## Datalogger Type 575 MP1



### Measuring and recording of:

- Water Level
- Water Temperature
- Conductivity
- pH

### Advantages:

- Robust stainless steel housing, sea water resistant
- Compact design,  $\varnothing 48 \times 395$ mm (probe dimensions);
- With integrated power supply for 10 years operation with 3 Million measurements;
- Vented cable for relative pressure measurements;
- Non-volatile Flash- memory for at least 180.000 measurements for each parameter
- Pressure- tight until 10 bar (submersible until 100m water column)
- Tough and long- term stable sensors

# Datalogger Type 575-MP1

## Technical Data

### Water Level

Measuring principle:	Relative pressure
Measuring range:	Selectable until 100m water column;
Accuracy:	<0.05% of measuring range
Long term stability:	<0.05% of measuring range / year
Resolution:	Standard: 1cm / optionally: 1mm
Temperature compensation:	0... +50°C / as an option: 0... +70°C

### Temperature

Measuring range:	-5...+50°C / as an option: -5...+70°C (ice-free area)
Accuracy:	<0.1 °C
Long term stability:	<0.02°C / year
Resolution:	0.1°C



### Manufacturer

#### HT Hydrotechnik GmbH

Im Wang 18 • Industrial area  
87634 Obergünzburg / Germany  
Tel.: +49/(0)8372/9215-0  
Fax: +49/(0)8372/9215-16  
eMail: ht@ht-hydrotechnik.com

Internet: [www.ht-hydrotechnik.com](http://www.ht-hydrotechnik.com)

### Conductivity

Measuring principle:	4-pole graphite electrode
Measuring range:	0... 200.000 µS/cm (0...200 mS/cm)
Accuracy:	<0.5% of current value, min. 2 µS/cm (0.002 mS/cm)
Resolution:	0.001 mS/cm until value of 2 mS/cm 0.01 mS/cm until value of 20 mS/cm 0.1 mS/cm until value of 200 mS/cm

### pH

Measuring principle:	Glass-electrode with integrated temperature sensor
Measuring range:	0... 14 pH
Accuracy:	<0.02 pH
Resolution:	0.01 pH

### Datalogger

General layout	Datalogger and Lithium battery in probe-housing integrated; RS232 interface in read-out unit;
Memory:	4MB non-volatile, for at least 180.000 Data sets;
Power supply:	Lithium battery, for at least 10 years operation with 3 Million measurements; factory-changeable
Sample interval:	Standard: selectable 1 Min...99 days Option: selectable from 1 Second

### Further Data

Dimensions:	Probe: Ø48 x 395 mm Read-out unit: Ø24 x 140 mm
Material:	Stainless steel AISI 316Ti
Vented cable:	Ø 6mm flexible, UV-resistant PUR coating; Kevlar strengthen to avoid cable-stretching; integrated tube for compensation of barometric fluctuation;
Ventilation for relative pressure:	A special filter avoids inflow of humidity into the housing. The read-out unit is protected against flooding until max. 3m water column. No drying cartridges are necessary.
Length of cable:	Selectable until max. 500m
Interface:	Serial, RS232 / connection via USB

Modifications in cause of technical progresses are reserved;